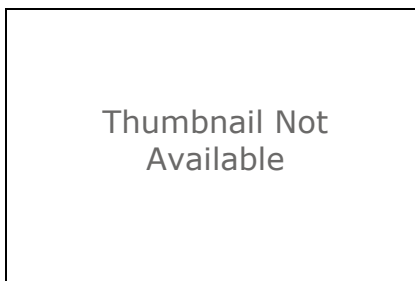


nbac_2023_20240530

Shapefile



Tags

wildland fires, wildfires, forest fires, burned area, fire history, satellite remote sensing, natural disturbance, feux de forêt, incendies de forêt, superficie brûlée, historique des feux, télédétection satellitaire, perturbation naturelle, Canada

Summary

The NBAC is a national, geospatial burned area product compiled annually since 1972 for annual estimates of carbon emissions. A rule-based decision process is used to select the best burned area perimeters from a number of available data providers. // La CNSB est un outil de cartographie nationale et géospatiale des superficies brûlées compilé chaque année depuis 1972 afin d'en calculer annuellement les émissions de carbone. Un processus décisionnel axé sur les règles permet de sélectionner les meilleures fournisseurs de données disponibles pour représenter une situation de feu donnée.

Description

The National Burned Area Composite (NBAC) is a product created as a component of the Fire Monitoring, Accounting and Reporting System (FireMARS), jointly developed by the Canada Centre for Mapping and Earth Observation (formerly the Canada Centre for Remote Sensing) of Natural Resources Canada and the Canadian Forest Service. FireMARS was initially developed with funding support from the Canadian Space Agency Government Related Initiatives Program (<http://www4.asc-csa.gc.ca/auot-eoau/eng/grip/about.aspx>) through a collaboration of those in fire research (<http://www.nrcan.gc.ca/forests/fire/13143>), forest carbon accounting (<http://www.nrcan.gc.ca/forests/climate-change/13087>) and remote sensing.

NBAC is a national product compiled annually since 1972 by the FireMARS system which tracks forest fires for annual estimates of carbon emissions and to help identify National Forest Inventory plots that may have been disturbed by fire. See the FireMARS website at <http://www.nrcan.gc.ca/forests/fire/13159> and carbon accounting - disturbance monitoring website (<http://www.nrcan.gc.ca/forests/climate-change/13109>) for additional information.

Data from two types of providers is used to generate NBAC:

- 1) Natural Resources Canada, and
- 2) Provincial, Territorial, and Parks Canada agencies.

A rule-based decision process is used to select the best data source for each fire event based on factors such as how well the burn polygon follows the shape of the fire as observed on post-burn satellite imagery, the data source itself, and what methods were used to delineate the burn.

=====

La Composite nationale des superficies brûlées (CNSB) fait partie du système FireMARS (Fire

Monitoring, Accounting and Reporting System) mis au point par le Centre canadien de cartographie et d'observation de la Terre (anciennement le Centre canadien de télédétection) et le Service canadien des forêts. Le système FireMARS a d'abord été rendu possible grâce à un soutien financier du Programme d'initiatives gouvernementales en observation de la Terre (IGOT) de l'Agence spatiale canadienne (<http://www4.asc-csa.gc.ca/auot-eoau/fra/igot/About%20Grip.aspx>) en collaboration avec les initiatives de recherche sur les feux (<http://www.rncan.gc.ca/forets/feux/13144>), de comptabilisation du carbone forestier (<http://www.rncan.gc.ca/forets/changements-climatiques/13088>) et de télédétection.

CNSB est un produit national compilé annuellement depuis 1972 par le système FireMARS (Fire Monitoring, Accounting and Reporting System), qui fait le suivi des incendies de forêt afin d'estimer les émissions annuelles de carbone et de déterminer les parcelles de l'Inventaire forestier national (IFN) qui peuvent avoir été perturbées par les incendies. Pour obtenir plus de renseignements, consulter la page Web sur le système FireMARS (<http://www.rncan.gc.ca/forets/feux/13160>) et la comptabilisation du carbone forestier - surveillance des perturbations (<http://www.rncan.gc.ca/forets/changements-climatiques/13110>).

Pour générer la CNSB, on utilise des données provenant de deux types de sources :

- 1) Ressources naturelles Canada;
- 2) les organismes provinciaux et territoriaux et Parcs Canada.

Un processus de décision basé sur des règles est utilisé dans la sélection des meilleures sources de données pour chaque incendie, en fonction de divers facteurs : dans quelle mesure le polygone des surfaces brûlées correspond-elle à la forme de l'incendie observée sur l'imagerie satellitaire post-incendie, la source de données elle-même, ainsi que les méthodes qui ont été utilisées pour la délimitation de l'aire brûlée.

Credits

There are no credits for this item.

Use limitations

There are no access and use limitations for this item.

Extent

| | | | |
|--------------|-------------|--------------|------------|
| West | -148.385673 | East | -36.117746 |
| North | 73.720636 | South | 37.657229 |

Scale Range

| | |
|-----------------------------|---------------|
| Maximum (zoomed in) | 1:5,000 |
| Minimum (zoomed out) | 1:150,000,000 |

ArcGIS Metadata ►

Topics and Keywords ►

THEMES OR CATEGORIES OF THE RESOURCE biota, environment

* CONTENT TYPE Downloadable Data

Hide Topics and Keywords ▲

Citation ►

* TITLE nbac_2023_20240530
 CREATION DATE 2024-05-16 00:00:00

PRESENTATION FORMATS * digital map
 FGDC GEOSPATIAL PRESENTATION FORMAT map

[Hide Citation ▲](#)

Resource Details ►

DATASET LANGUAGES * English (CANADA)
 DATASET CHARACTER SET utf8 - 8 bit UCS Transfer Format

SPATIAL REPRESENTATION TYPE * vector

* PROCESSING ENVIRONMENT Version 6.2 (Build 9200) ; Esri ArcGIS 10.5.0.6491

ARCGIS ITEM PROPERTIES

* NAME nbac_2023_20240530
 * SIZE 223.729
 * LOCATION file:///S-EDM-Berg\WorkGroups\EDM\MAFiMS\datamarts\common\burnarea\nbac\NIR_2025\nbac_2023_20240530.shp
 * ACCESS PROTOCOL Local Area Network

[Hide Resource Details ▲](#)

Extents ►

EXTENT

GEOGRAPHIC EXTENT

BOUNDING RECTANGLE

EXTENT TYPE Extent used for searching
 * WEST LONGITUDE -148.385673
 * EAST LONGITUDE -36.117746
 * NORTH LATITUDE 73.720636
 * SOUTH LATITUDE 37.657229
 * EXTENT CONTAINS THE RESOURCE Yes

EXTENT IN THE ITEM'S COORDINATE SYSTEM

* WEST LONGITUDE -2184697.247300
 * EAST LONGITUDE 2606109.787600
 * SOUTH LATITUDE -693228.601530
 * NORTH LATITUDE 2693220.951100
 * EXTENT CONTAINS THE RESOURCE Yes

[Hide Extents ▲](#)

Resource Points of Contact ►

POINT OF CONTACT

INDIVIDUAL'S NAME Rob Skakun
 ORGANIZATION'S NAME Government of Canada; Natural Resources Canada; Canadian Forest Service; Northern Forestry Centre; Canadian Wildland Fire Information System (CWFIS) Group

CONTACT'S ROLE point of contact

CONTACT INFORMATION ►

ADDRESS

DELIVERY POINT 5320 122 Street
 CITY Edmonton
 ADMINISTRATIVE AREA Alberta
 POSTAL CODE T6H 3S5
 COUNTRY CA
 E-MAIL ADDRESS Rob.Skakun@canada.ca

Hide Contact information ▲

Hide Resource Points of Contact ▲

Resource Maintenance ►

RESOURCE MAINTENANCE

UPDATE FREQUENCY as needed

Hide Resource Maintenance ▲

Spatial Reference ►

ARCGIS COORDINATE SYSTEM

- * TYPE Projected
- * GEOGRAPHIC COORDINATE REFERENCE unknown
- * PROJECTION NAD83_/_NRCan_LCC_Canada
- * COORDINATE REFERENCE DETAILS

PROJECTED COORDINATE SYSTEM

X ORIGIN -34655800
 Y ORIGIN -30001600
 XY SCALE 129952262.74881823
 Z ORIGIN -100000
 Z SCALE 10000
 M ORIGIN -100000
 M SCALE 10000
 XY TOLERANCE 0.001
 Z TOLERANCE 0.001
 M TOLERANCE 0.001

HIGH PRECISION true

WELL-KNOWN TEXT PROJCS["NAD83_/_NRCan_LCC_Canada",GEOGCS["unknown",DATUM
 ["North_American_Datum_1983",SPHEROID["GRS
 1980",6378137.0,298.257222101]],PRIMEM["Greenwich",0.0],UNIT
 ["degree",0.0174532925199433]],PROJECTION
 ["Lambert_Conformal_Conic_2SP"],PARAMETER["false_easting",0.0],PARAMETER
 ["false_northing",0.0],PARAMETER["central_meridian",-95.0],PARAMETER
 ["standard_parallel_1",49.0],PARAMETER["standard_parallel_2",77.0],PARAMETER
 ["latitude_of_origin",49.0],UNIT["Metre",1.0]]

REFERENCE SYSTEM IDENTIFIER

DIMENSION horizontal
 VALUE EPSG::3978
 CODESPACE <http://www.epsg-registry.org>
 VERSION 8.4

[Hide Spatial Reference ▲](#)

Spatial Data Properties ►

VECTOR ►

* LEVEL OF TOPOLOGY FOR THIS DATASET geometry only

GEOMETRIC OBJECTS

FEATURE CLASS NAME nbac_2023_20240530

* OBJECT TYPE composite

* OBJECT COUNT 2199

[Hide Vector ▲](#)

ARCGIS FEATURE CLASS PROPERTIES ►

FEATURE CLASS NAME nbac_2023_20240530

* FEATURE TYPE Simple

* GEOMETRY TYPE Polygon

* HAS TOPOLOGY FALSE

* FEATURE COUNT 2199

* SPATIAL INDEX FALSE

* LINEAR REFERENCING FALSE

[Hide ArcGIS Feature Class Properties ▲](#)[Hide Spatial Data Properties ▲](#)

Data Quality ►

SCOPE OF QUALITY INFORMATION ►

RESOURCE LEVEL dataset

[Hide Scope of quality information ▲](#)[Hide Data Quality ▲](#)

Lineage ►

LINEAGE STATEMENT

For NBAC v20240530:

- Includes changes from v20240228 and new fire perimeters from Parks Canada

For NBAC v20240228:

- extended the NBAC time series back to 1972
- added new fire perimeters mapped in northern Canada (see <https://doi.org/10.3390/rs16020230>)
- remapped perimeters derived by the HANDS data source with MAFiMS.
- integrated updated fire perimeters from Parks Canada (for years 1972 to 2021)
- significant changes to the attribute table:
 - replaced numeric codes with descriptive text for BASRC, FIREMAPS, FIREMAPM, FIRECAUS
 - reclassified FIRECAUS into 3 categories (Undetermined, Natural, Human)
 - renamed date fields to easily distinguish hotspot and agency dates
 - added a field for prescribed fires
 - added a separate field for national parks (NATPARKS) to query by park

August 10, 2021
version 20210810

- updated Parks Canada data for years 1986 to 2017 using CNFDB v20201005
- applied an adjusted area burned to Agency conventional perimeters for all years in ADH_HA (where ADJ_FLAG = 2)

September 21 2020

- updated MAFiMS fire polygons for nfireid's 1448, 1115, 1136 for year 1989 (version 20200921)
- corrected YT fire cause for years 1986 to 2003 (version 20200921)

July 03, 2020

- 2018 - AB agency updates ingested (version 20200703)
- 2015 - Replaced MAFiMS with updated PC agency data in WBNP (nfireid404,337,262,344,328,322,327,287,302,265,286,240,249,256,250,245,271,273), (version 20200703)
- 2004 - Corrected SDATE and EDATE hotspot dates (version 20200703)

November 29, 2019

- 1990, 1991, 1995, 1996, 1997, 2000, 2006, 2007 (version 20191129)
- C2C fire polygon nfireid 1 in year 1990 replaced with agency polygon
- C2C fire polygon nfireid 14 in year 1991 replaced with agency polygon
- C2C fire polygon nfireid 1108 in year 1995 replaced with agency polygon
- C2C fire polygon nfireid 182 in year 1996 replaced with agency polygon
- C2C fire polygon nfireid 462 in year 1997 replaced with agency polygon
- Agency fire polygon nfireid 1011 in year 2000 added
- C2C fire polygon nfireid 671 in year 2006 replaced with agency polygon
- C2C fire polygon nfireid 386 in year 2007 replaced with agency polygon

September 19, 2019

- 1986 - 2018 NBAC (version 20190919)
- C2C (BASRC 4) fire polygons added to years 1986 to 2013
- Ruleset 9 (r9) includes best-available polygons from MAFiMS, C2C, Agency, and HANDS
- Attribute modifications include: YEAR (new); BASRC (includes value 4); SDATE EDATE AFSDATE AFEDATE and CAPDATE (change datetime to date); POLY_HA (was TOTAREA); ADJ_HA (was UTOTAREA); ADJ_FLAG (was AREAMODT); AGENCY (new); VERSION (was NBACVERS); COMMENTS (was COMM); SALVAGE (removed); PB_HARV (removed); AREAMODA (removed); AREAMODB (removed); AREAMODV (removed); CDATE (removed, contained in version)
- NBAC burn polygons subdivided by provincial, territorial, and national parks boundaries
- New MAFiMS polygons for years 1986 to 2018

June 26, 2019

2018 NBAC (version 20190626_1020)

August 29, 2018

- 2003 NBAC (version 20180829_1112)
- Agency fire polygon nfireid 5 in year 2003 (location NWT) removed. Mapped with MAFiMS nfireid 3
- 1993 NBAC (version 20180829_1113)
- Agency fire polygon nfireid 255 in year 1993 (location Onatrio) changed to nfireid 248
- 1992 NBAC (version 20180829_1113)
- Agency fire polygon nfireid 204 in year 1992 (location Ontario) changed to nfireid 215
- 1991 NBAC (version 20180829_1113)
- Agency fire polygon nfireid 373 in year 1991 (location Ontario) changed to nfireid 383
- MAFiMS fire polygon nfireid 382 in year 1991 removed. Fire burned in 1990.
- 1990 NBAC (version 20180829_1114)

- Agency fire polygon nfireid 321 in year 1990 (location Ontario) changed to nfireid 342 1989 NBAC (version 20180829_1114)
- Agency fire polygon nfireid 1058 in year 1989 (location Sask) removed. Mapped with MAFiMS nfireid 917 1987 NBAC (version 20180829_1115)
- Agency fire polygon nfireid 378 in year 1987 (location Ontario) changed to nfireid 397

July 24, 2018

- 2017 NBAC (version 20180725_1603)
- 2016 NBAC (version 20180725_1602)
 - Repair Geometry tool applied (reduced burned area by 33 ha from version 20180420_1321)
- 2015 NBAC (version 20180724_0843)
 - Removed HANDS fire polygon nfireid 75 (No fire occurred at this location)
- 2012 NBAC (version 20180724_0849)
 - Added Parks Canada fire polygon nfireid 106
 - Replaced HANDS fire polygon nfireid 95 and 100 with Parks Canada fire polygons
- 2009 NBAC (version 20180724_0854)
 - Added Parks Canada fire polygon nfireid 36 and 2365
 - Replaced HANDS fire polygon nfireid 45 and 46 with Parks Canada fire polygons
- 2006 NBAC (version 20180724_0857)
 - Added NWT fire polygon nfireid 64
- 2005 NBAC (version 20180724_0858)
 - Added NWT fire polygon nfireid 1094
- 2004 NBAC (version 20180724_0859)
 - Added NWT fire polygon nfireid 190
 - Replaced HANDS fire polygon nfireid 150, 191, 194, and 171 with NWT fire polygons
- 1986-2003 NBAC (preliminary version 20180724)
 - NFDB Provincial and Territorial Government and Parks Canada agency data
 - HANDS source for 1995-2003 only
 - MAFiMS source for NWT only, all years

April 24, 2018

- 2016 NBAC (version 20180420_1321)
 - NFIREID 255 Agency aerial photography delineation replaces MAFiMS

January 8, 2018

- 2012 NBAC updates (new version is 20180103_0935)
 - Updates to MAFiMS polygon NFIREID's 252, 1067, 256, 260, 253, 258, 304, 317, 332, 345, 340, 367

September 18, 2017

- 2015 NBAC (version 20170707_1448):
 - 1 new fire event from HANDS mapped in Newfoundland and Labrador
 - 16 fire events from MAFiMS remapped in Saskatchewan

July 12, 2017

- 2016 NBAC (version 20170707_1144):
 - NFIREID 255 was created by integrating aerial photo delineated and MAFiMS polygons over the burned area. This fire event will be updated in NBAC upon receiving a revised burned area polygon from the Gov't of Alberta.

December 22, 2016

- 2004 to 2015 NBAC updates (version 10161128):
 - Replaced Northwest Territories agency fires with Landsat data sources and the MAFiMS mapping method for years 2004 to 2013.
 - Ingested all agency fire polygons less than 10 ha for years 2004 to current (see September 9, 2016 below).
 - Replaced Quebec and Parks Canada agency data with updated fire polygons and

attribution for years 2004 to 2014.

- Corrections to year of burn in the agency fire attribution where found (4 fire events in 2005 and 2010 from British Columbia, Alberta, Saskatchewan, Quebec).
- Removed duplicate polygons from agency data located over the same fire event where found (6 fire events in 2006, 2010, 2013, 2014 from Northwest Territories, British Columbia, Saskatchewan, Manitoba).
- Clipped agency polygon boundaries to correct year of burn (14 fire events in 2006, 2008, 2010 to 2015 from Yukon, British Columbia, Alberta, Saskatchewan, Manitoba).

September 9, 2016

2015 NBAC (version 20160914_1144):

- removed the 10 ha minimum size filter for agency burns

December 30, 2015

2014 NBAC updated (version 20151230_1002):

- 6 HANDS polygons < 250 ha were added that previously had been missed

December 1, 2015

2004 to 2014 NBAC updated (version 20151126):

- New Quebec data is added. Upon request, Quebec provided updated shapefiles with more accurate mapping method and data source. Polygons did not change.
- Changes to NWT crosswalk to NBAC attributes. Image delineation method was changed from 4 (other) to 2 (sketchmap).
- NFIREID 731 for 2013 was replaced with MAFIMS. This fire was previously mapped by Agency (Quebec) in NBAC.

[Hide Lineage ▲](#)

Geoprocessing history ►

PROCESS

DATE 2024-05-29 14:05:18

TOOL LOCATION c:\program files (x86)\arcgis\desktop10.5\ArcToolbox\Toolboxes\Data Management Tools.tbx\CalculateField

COMMAND ISSUED

CalculateField nbac_2023_20240515 VERSION "20240515" VB #

INCLUDE IN LINEAGE WHEN EXPORTING METADATA No

PROCESS

DATE 2024-05-29 14:10:13

TOOL LOCATION c:\program files (x86)\arcgis\desktop10.5\ArcToolbox\Toolboxes\Data Management Tools.tbx\CalculateField

COMMAND ISSUED

CalculateField nbac_2023_20240515 PRESCRIBED "true" VB #

INCLUDE IN LINEAGE WHEN EXPORTING METADATA No

PROCESS

DATE 2024-05-29 14:32:08

TOOL LOCATION c:\program files (x86)\arcgis\desktop10.5\ArcToolbox\Toolboxes\Data Management Tools.tbx\CalculateField

COMMAND ISSUED

CalculateField nbac_2023_20240515 NATPARK NI VB #

INCLUDE IN LINEAGE WHEN EXPORTING METADATA No

PROCESS

DATE 2024-05-29 14:32:28

TOOL LOCATION c:\program files (x86)\arcgis\desktop10.5\ArcToolbox\Toolboxes\Data Management Tools.tbx\CalculateField

COMMAND ISSUED

CalculateField nbac_2023_20240515 NATPARK NI VB #

INCLUDE IN LINEAGE WHEN EXPORTING METADATA No

PROCESS

DATE 2024-05-29 17:12:18

TOOL LOCATION c:\program files (x86)\arcgis\desktop10.5\ArcToolbox\Toolboxes\Data Management Tools.tbx\Append

COMMAND ISSUED

```
Append pc_2023_nrlcc_updated_clip_app nbac_2023_20240515 NO_TEST "YEAR" "YEAR"
true false false 19 Double 0 0 ,First,#,pc_2023_nrlcc_updated_clip_app,YEAR,-
1,-1;NFIREID "NFIREID" true false false 19 Double 0
0 ,First,#,pc_2023_nrlcc_updated_clip_app,NFIREID,-1,-1;BASRC "BASRC" true
false false 254 Text 0 0 ,First,#,pc_2023_nrlcc_updated_clip_app,BASRC,-1,-
1;FIREMAPS "FIREMAPS" true false false 254 Text 0
0 ,First,#,pc_2023_nrlcc_updated_clip_app,FIREMAPS,-1,-1;FIREMAPM "FIREMAPM"
true false false 254 Text 0
0 ,First,#,pc_2023_nrlcc_updated_clip_app,FIREMAPM,-1,-1;FIRECAUS "FIRECAUS"
true false false 254 Text 0
0 ,First,#,pc_2023_nrlcc_updated_clip_app,FIRECAUS,-1,-1;HS_SDATE "HS_SDATE"
true true false 8 Date 0 0 ,First,#,pc_2023_nrlcc_updated_clip_app,HS_SDATE,-
1,-1;HS_EDATE "HS_EDATE" true true false 8 Date 0
0 ,First,#,pc_2023_nrlcc_updated_clip_app,HS_EDATE,-1,-1;AG_SDATE "AG_SDATE"
true true false 8 Date 0 0 ,First,#,pc_2023_nrlcc_updated_clip_app,AG_SDATE,-
1,-1;AG_EDATE "AG_EDATE" true true false 8 Date 0
0 ,First,#,pc_2023_nrlcc_updated_clip_app,AG_EDATE,-1,-1;CAPDATE "CAPDATE" true
true false 8 Date 0 0 ,First,#,pc_2023_nrlcc_updated_clip_app,CAPDATE,-1,-
1;POLY_HA "POLY_HA" true false false 19 Double 0
0 ,First,#,pc_2023_nrlcc_updated_clip_app,POLY_HA,-1,-1;ADJ_HA "ADJ_HA" true
false false 19 Double 0 0 ,First,#,pc_2023_nrlcc_updated_clip_app,ADJ_HA,-1,-
1;ADJ_FLAG "ADJ_FLAG" true false false 254 Text 0 0 ,First,#;ADMIN_AREA
"ADMIN_AREA" true false false 5 Text 0
0 ,First,#,pc_2023_nrlcc_updated_clip_app,ADMIN_AREA,-1,-1;NATPARK "NATPARK"
true false false 50 Text 0 0 ,First,#,pc_2023_nrlcc_updated_clip_app,NATPARK,-
1,-1;PRESCRIBED "PRESCRIBED" true false false 50 Text 0
0 ,First,#,pc_2023_nrlcc_updated_clip_app,PRESCRIBED,-1,-1;VERSION "VERSION"
true false false 30 Text 0 0 ,First,#,pc_2023_nrlcc_updated_clip_app,VERSION,-
1,-1;GID "GID" true false false 254 Text 0
0 ,First,#,pc_2023_nrlcc_updated_clip_app,GID,-1,-1" #
```

INCLUDE IN LINEAGE WHEN EXPORTING METADATA No

PROCESS

DATE 2024-05-30 08:13:58

TOOL LOCATION c:\program files (x86)\arcgis\desktop10.5\ArcToolbox\Toolboxes\Data Management Tools.tbx\CalculateField

COMMAND ISSUED

CalculateField nbac_2023_20240515 ADJ_FLAG "true" VB #

INCLUDE IN LINEAGE WHEN EXPORTING METADATA No

PROCESS

DATE 2024-05-30 14:36:26

TOOL LOCATION c:\program files (x86)\arcgis\desktop10.5\ArcToolbox\Toolboxes\Data Management Tools.tbx\CalculateField

COMMAND ISSUED

CalculateField nbac_2023_20240530 VERSION "20240530" VB #

INCLUDE IN LINEAGE WHEN EXPORTING METADATA No

[Hide Geoprocessing history ▲](#)**Distribution ►**

DISTRIBUTION FORMAT

VERSION 1000

* NAME Shapefile

TRANSFER OPTIONS

* TRANSFER SIZE 223.729

[Hide Distribution ▲](#)**Fields ►**DETAILS FOR OBJECT [nbac_2023_20240530 ►](#)

* TYPE Feature Class

* ROW COUNT 2199

FIELD [FID ►](#)

* ALIAS FID

* DATA TYPE OID

* WIDTH 4

* PRECISION 0

* SCALE 0

* FIELD DESCRIPTION
Internal feature number.* DESCRIPTION SOURCE
Esri* DESCRIPTION OF VALUES
Sequential unique whole numbers that are automatically generated.[Hide Field FID ▲](#)FIELD [Shape ►](#)

* ALIAS Shape

* DATA TYPE Geometry

* WIDTH 0

* PRECISION 0

* SCALE 0

* FIELD DESCRIPTION
Feature geometry.* DESCRIPTION SOURCE
Esri* DESCRIPTION OF VALUES
Coordinates defining the features.[Hide Field Shape ▲](#)FIELD [YEAR ►](#)

* ALIAS YEAR

* DATA TYPE Double

* WIDTH 19
 * PRECISION 0
 * SCALE 0
 FIELD DESCRIPTION
 YEAR is the fire year

DESCRIPTION SOURCE
 None

Hide Field YEAR ▲

FIELD NFIREID ►

* ALIAS NFIREID
 * DATA TYPE Double
 * WIDTH 19
 * PRECISION 0
 * SCALE 0

FIELD DESCRIPTION

NFIREID is a uniquely assigned ID to each fire event over a spatial region and for a specific year. It is the common ID used to link a fire event crossing a provincial, territorial, or national park boundary for a specific year.

DESCRIPTION SOURCE
 None

Hide Field NFIREID ▲

FIELD BASRC ►

* ALIAS BASRC
 * DATA TYPE String
 * WIDTH 254
 * PRECISION 0
 * SCALE 0

FIELD DESCRIPTION

BASRC identifies the burned area product from a data provider.

DESCRIPTION SOURCE
 None

LIST OF VALUES

VALUE MAFiMS

DESCRIPTION MAFiMS (Multi-Acquisition Fire Mapping System) is a burned area product created by the Canadian Forest Service of Natural Resources Canada.
<https://doi.org/10.1071/WF19201>

ENUMERATED DOMAIN VALUE DEFINITION SOURCE None

VALUE C2C

DESCRIPTION C2C (Composite to Change) is a burned area product created by the Canadian Forest Service of Natural Resources Canada. <https://doi.org/10.1016/j.rse.2017.03.035>

ENUMERATED DOMAIN VALUE DEFINITION SOURCE None

VALUE TFMS

DESCRIPTION TFMS (Tundra Fire Mapping System) is a burned area product created by the Canadian Forest Service of Natural Resources Canada. <https://doi.org/10.3390/rs16020230>

ENUMERATED DOMAIN VALUE DEFINITION SOURCE None

VALUE Agency

DESCRIPTION Agency are burned area products created by the Provincial, Territorial, and Parks Canada fire management agencies.

ENUMERATED DOMAIN VALUE DEFINITION SOURCE None

Hide Field BASRC ▲

FIELD FIREMAPS ►

* ALIAS FIREMAPS

* DATA TYPE String

* WIDTH 254

* PRECISION 0

* SCALE 0

FIELD DESCRIPTION

FIREMAPS describes the data source or platform used to identify the burn.

DESCRIPTION SOURCE

None

LIST OF VALUES

VALUE Undefined

DESCRIPTION Source of detection not defined

ENUMERATED DOMAIN VALUE DEFINITION SOURCE None

VALUE Ground survey

DESCRIPTION Ground or field survey

ENUMERATED DOMAIN VALUE DEFINITION SOURCE None

VALUE Aerial survey

DESCRIPTION Helicopter or fixed-wing aircraft

ENUMERATED DOMAIN VALUE DEFINITION SOURCE None

VALUE Aerial photography

DESCRIPTION Digital or analogue aerial photographs

ENUMERATED DOMAIN VALUE DEFINITION SOURCE None

VALUE Satellite hotspots

DESCRIPTION Point hotspot derived from satellite (MODIS, AVHRR, VIIRS-AF, VIIRS-I)

ENUMERATED DOMAIN VALUE DEFINITION SOURCE None

VALUE Satellite undefined

DESCRIPTION Source of satellite undefined

ENUMERATED DOMAIN VALUE DEFINITION SOURCE None

VALUE MODIS

DESCRIPTION Moderate Resolution Imaging Spectroradiometer (MODIS) satellite imagery

ENUMERATED DOMAIN VALUE DEFINITION SOURCE None

VALUE Landsat

DESCRIPTION Landsat 5, 7, 8, or 9 satellite imagery (30m resolution)

ENUMERATED DOMAIN VALUE DEFINITION SOURCE None

VALUE Landsat MSS

DESCRIPTION Landsat Multi-Spectral Scanner (60m resolution)

ENUMERATED DOMAIN VALUE DEFINITION SOURCE None

VALUE Sentinel-2

DESCRIPTION Sentinel-2 satellite imagery
 ENUMERATED DOMAIN VALUE DEFINITION SOURCE None

Hide Field FIREMAPS ▲

FIELD FIREMAPM ►

* ALIAS FIREMAPM
 * DATA TYPE String
 * WIDTH 254
 * PRECISION 0
 * SCALE 0

FIELD DESCRIPTION

FIREMAPM describes the method used to delineate the burn polygon.

DESCRIPTION SOURCE

None

LIST OF VALUES

VALUE Undefined

DESCRIPTION Method of burned area mapping not defined

ENUMERATED DOMAIN VALUE DEFINITION SOURCE None

VALUE Manually delineated

DESCRIPTION Sketch mapping or manual (human) interpretation. May be manually delineated onto a map and subsequently digitized or digitized directly using a digital tablet or computer monitor

ENUMERATED DOMAIN VALUE DEFINITION SOURCE None

VALUE Direct from GPS

DESCRIPTION Digitized from a Global Positioning System (GPS) unit

ENUMERATED DOMAIN VALUE DEFINITION SOURCE None

VALUE Processed imagery

DESCRIPTION Digitized using automated remote sensing methods

ENUMERATED DOMAIN VALUE DEFINITION SOURCE None

VALUE Buffered points

DESCRIPTION Digitized by buffering a fire location

ENUMERATED DOMAIN VALUE DEFINITION SOURCE None

Hide Field FIREMAPM ▲

FIELD FIRECAUS ►

* ALIAS FIRECAUS
 * DATA TYPE String
 * WIDTH 254
 * PRECISION 0
 * SCALE 0

FIELD DESCRIPTION

FIRECAUS describes the ignition source of the fire recorded by the agency.

DESCRIPTION SOURCE

None

LIST OF VALUES

VALUE Undetermined

DESCRIPTION Ignition source undetermined.
 ENUMERATED DOMAIN VALUE DEFINITION SOURCE None

VALUE Natural
 DESCRIPTION Ignition source by natural cause. Most often lightning.
 ENUMERATED DOMAIN VALUE DEFINITION SOURCE None

VALUE Human
 DESCRIPTION Ignition source by human cause. Examples include non-industrial activity, industrial activity, prescribed burn, arson, and miscellaneous activity.
 ENUMERATED DOMAIN VALUE DEFINITION SOURCE None

Hide Field FIRECAUS ▲

FIELD HS_SDATE ►

* ALIAS HS_SDATE
 * DATA TYPE Date
 * WIDTH 8
 * PRECISION 0
 * SCALE 0

FIELD DESCRIPTION

HS_SDATE is the date of the first detected hotspot within the spatial extent of the fire event. Null if no hotspots were detected. AVHRR hotspots are used from 1989 to 2000. MODIS hotspots are from 2001 to current.

DESCRIPTION SOURCE
 None

Hide Field HS_SDATE ▲

FIELD HS_EDATE ►

* ALIAS HS_EDATE
 * DATA TYPE Date
 * WIDTH 8
 * PRECISION 0
 * SCALE 0

FIELD DESCRIPTION

HS_EDATE is the date of the last detected hotspot within the spatial extent of the fire event. Null if no hotspots were detected. AVHRR hotspots are used from 1989 to 2000. MODIS hotspots are from 2001 to current.

DESCRIPTION SOURCE
 None

Hide Field HS_EDATE ▲

FIELD AG_SDATE ►

* ALIAS AG_SDATE
 * DATA TYPE Date
 * WIDTH 8
 * PRECISION 0
 * SCALE 0

FIELD DESCRIPTION

AG_SDATE is the fire start date reported by the agency. The date could also represent the recorded date or detection date of the fire by the agency. Where different dates are recorded by agencies for cross-border fires, NBAC uses the earliest date. Null if agency

date was not provided.

[Hide Field AG_SDATE ▲](#)

FIELD AG_EDATE ►

* ALIAS AG_EDATE
* DATA TYPE Date
* WIDTH 8
* PRECISION 0
* SCALE 0

FIELD DESCRIPTION

AG_EDATE is the fire end date reported by the agency. Where different dates are recorded by agencies for cross-border fires, NBAC uses the last date. Null if agency date was not provided.

DESCRIPTION SOURCE

None

[Hide Field AG_EDATE ▲](#)

FIELD CAPDATE ►

* ALIAS CAPDATE
* DATA TYPE Date
* WIDTH 8
* PRECISION 0
* SCALE 0

FIELD DESCRIPTION

CAPDATE is the acquisition date of the source data. Examples include date of GPS acquisition, air photo acquisition, and satellite image. Null if not provided.

DESCRIPTION SOURCE

None

[Hide Field CAPDATE ▲](#)

FIELD POLY_HA ►

* ALIAS POLY_HA
* DATA TYPE Double
* WIDTH 19
* PRECISION 0
* SCALE 0

FIELD DESCRIPTION

POLY_HA is the total area calculated in hectares using the Canada Albers Equal Area Conic projection.

DESCRIPTION SOURCE

None

[Hide Field POLY_HA ▲](#)

FIELD ADJ_HA ►

* ALIAS ADJ_HA
* DATA TYPE Double
* WIDTH 19
* PRECISION 0

* SCALE 0

FIELD DESCRIPTION

ADJ_HA is an adjusted area burn calculated in hectares. Area burned adjustment models are described in <https://doi.org/10.1088/1748-9326/abfb2c>.

DESCRIPTION SOURCE

None

Hide Field ADJ_HA ▲

FIELD ADMIN_AREA ►

* ALIAS ADMIN_AREA

* DATA TYPE String

* WIDTH 5

* PRECISION 0

* SCALE 0

FIELD DESCRIPTION

ADMIN_AREA is the location (Province, Territory, or Parks Canada) where the fire perimeter is mapped.

DESCRIPTION SOURCE

None

LIST OF VALUES

VALUE AB

DESCRIPTION Alberta

ENUMERATED DOMAIN VALUE DEFINITION SOURCE None

VALUE BC

DESCRIPTION British Columbia

ENUMERATED DOMAIN VALUE DEFINITION SOURCE None

VALUE MB

DESCRIPTION Manitoba

ENUMERATED DOMAIN VALUE DEFINITION SOURCE None

VALUE NB

DESCRIPTION New Brunswick

ENUMERATED DOMAIN VALUE DEFINITION SOURCE None

VALUE NL

DESCRIPTION Newfoundland and Labrador

ENUMERATED DOMAIN VALUE DEFINITION SOURCE None

VALUE NS

DESCRIPTION Nova Scotia

ENUMERATED DOMAIN VALUE DEFINITION SOURCE None

VALUE NT

DESCRIPTION Northwest Territories

ENUMERATED DOMAIN VALUE DEFINITION SOURCE None

VALUE NU

DESCRIPTION Nunavut

ENUMERATED DOMAIN VALUE DEFINITION SOURCE None

VALUE ON

DESCRIPTION Ontario
 ENUMERATED DOMAIN VALUE DEFINITION SOURCE None

VALUE PC
 DESCRIPTION Parks Canada
 ENUMERATED DOMAIN VALUE DEFINITION SOURCE None

VALUE PE
 DESCRIPTION Prince Edward Island
 ENUMERATED DOMAIN VALUE DEFINITION SOURCE None

VALUE QC
 DESCRIPTION Quebec
 ENUMERATED DOMAIN VALUE DEFINITION SOURCE None

VALUE SK
 DESCRIPTION Saskatchewan
 ENUMERATED DOMAIN VALUE DEFINITION SOURCE None

VALUE YT
 DESCRIPTION Yukon Territory
 ENUMERATED DOMAIN VALUE DEFINITION SOURCE None

Hide Field ADMIN_AREA ▲

FIELD ADJ_FLAG ►

* ALIAS ADJ_FLAG
 * DATA TYPE String
 * WIDTH 254
 * PRECISION 0
 * SCALE 0

FIELD DESCRIPTION

ADJ_FLAG identifies adjusted area calculations.

DESCRIPTION SOURCE
 None

LIST OF VALUES

VALUE true
 DESCRIPTION True is when an adjustment area model is applied.
 ENUMERATED DOMAIN VALUE DEFINITION SOURCE None

Hide Field ADJ_FLAG ▲

FIELD NATPARK ►

* ALIAS NATPARK
 * DATA TYPE String
 * WIDTH 50
 * PRECISION 0
 * SCALE 0

FIELD DESCRIPTION

NATPARK is the name of the Parks Canada National Park where the fire perimeter is mapped.

DESCRIPTION SOURCE
 None

LIST OF VALUES

VALUE MM

DESCRIPTION Mealy Mountains National Park Reserve of Canada

ENUMERATED DOMAIN VALUE DEFINITION SOURCE None

VALUE AL

DESCRIPTION Aulavik National Park of Canada

ENUMERATED DOMAIN VALUE DEFINITION SOURCE None

VALUE AY

DESCRIPTION Auyuittuq National Park of Canada

ENUMERATED DOMAIN VALUE DEFINITION SOURCE None

VALUE BA

DESCRIPTION Banff National Park of Canada

ENUMERATED DOMAIN VALUE DEFINITION SOURCE None

VALUE BP

DESCRIPTION Bruce Peninsula National Park of Canada

ENUMERATED DOMAIN VALUE DEFINITION SOURCE None

VALUE CB

DESCRIPTION Cape Breton Highlands National Park of Canada

ENUMERATED DOMAIN VALUE DEFINITION SOURCE None

VALUE EI

DESCRIPTION Elk Island National Park of Canada

ENUMERATED DOMAIN VALUE DEFINITION SOURCE None

VALUE FO

DESCRIPTION Forillon National Park of Canada

ENUMERATED DOMAIN VALUE DEFINITION SOURCE None

VALUE FU

DESCRIPTION Fundy National Park of Canada

ENUMERATED DOMAIN VALUE DEFINITION SOURCE None

VALUE GB

DESCRIPTION Georgian Bay Islands National Park of Canada

ENUMERATED DOMAIN VALUE DEFINITION SOURCE None

VALUE GL

DESCRIPTION Glacier National Park of Canada

ENUMERATED DOMAIN VALUE DEFINITION SOURCE None

VALUE GR

DESCRIPTION Grasslands National Park of Canada

ENUMERATED DOMAIN VALUE DEFINITION SOURCE None

VALUE GM

DESCRIPTION Gros Morne National Park of Canada

ENUMERATED DOMAIN VALUE DEFINITION SOURCE None

VALUE GF

DESCRIPTION Gulf Islands National Park Reserve of Canada

ENUMERATED DOMAIN VALUE DEFINITION SOURCE None

VALUE IV
 DESCRIPTION Ivvavik National Park of Canada
 ENUMERATED DOMAIN VALUE DEFINITION SOURCE None

VALUE JA
 DESCRIPTION Jasper National Park of Canada
 ENUMERATED DOMAIN VALUE DEFINITION SOURCE None

VALUE KE
 DESCRIPTION Kejimikujik National Park and National Historic Site of Canada
 ENUMERATED DOMAIN VALUE DEFINITION SOURCE None

VALUE KL
 DESCRIPTION Kluane National Park Reserve of Canada
 ENUMERATED DOMAIN VALUE DEFINITION SOURCE None

VALUE KO
 DESCRIPTION Kootenay National Park of Canada
 ENUMERATED DOMAIN VALUE DEFINITION SOURCE None

VALUE KG
 DESCRIPTION Kouchibouguac National Park of Canada
 ENUMERATED DOMAIN VALUE DEFINITION SOURCE None

VALUE LM
 DESCRIPTION La Mauricie National Park of Canada
 ENUMERATED DOMAIN VALUE DEFINITION SOURCE None

VALUE MI
 DESCRIPTION Mingan Archipelago National Park Reserve of Canada
 ENUMERATED DOMAIN VALUE DEFINITION SOURCE None

VALUE RE
 DESCRIPTION Mount Revelstoke National Park of Canada
 ENUMERATED DOMAIN VALUE DEFINITION SOURCE None

VALUE NA
 DESCRIPTION Nahanni National Park Reserve of Canada
 ENUMERATED DOMAIN VALUE DEFINITION SOURCE None

VALUE PR
 DESCRIPTION Pacific Rim National Park Reserve of Canada
 ENUMERATED DOMAIN VALUE DEFINITION SOURCE None

VALUE PP
 DESCRIPTION Point Pelee National Park of Canada
 ENUMERATED DOMAIN VALUE DEFINITION SOURCE None

VALUE PA
 DESCRIPTION Prince Albert National Park of Canada
 ENUMERATED DOMAIN VALUE DEFINITION SOURCE None

VALUE PE
 DESCRIPTION Prince Edward Island National Park of Canada
 ENUMERATED DOMAIN VALUE DEFINITION SOURCE None

VALUE PU
 DESCRIPTION Pukaskwa National Park of Canada

ENUMERATED DOMAIN VALUE DEFINITION SOURCE None

VALUE QU

DESCRIPTION Quttinirpaaq National Park of Canada

ENUMERATED DOMAIN VALUE DEFINITION SOURCE None

VALUE RM

DESCRIPTION Riding Mountain National Park of Canada

ENUMERATED DOMAIN VALUE DEFINITION SOURCE None

VALUE SI

DESCRIPTION Sirmilik National Park of Canada

ENUMERATED DOMAIN VALUE DEFINITION SOURCE None

VALUE TN

DESCRIPTION Terra Nova National Park of Canada

ENUMERATED DOMAIN VALUE DEFINITION SOURCE None

VALUE TI

DESCRIPTION Thousand Islands National Park of Canada

ENUMERATED DOMAIN VALUE DEFINITION SOURCE None

VALUE TM

DESCRIPTION Torngat Mountains National Park Reserve of Canada

ENUMERATED DOMAIN VALUE DEFINITION SOURCE None

VALUE TU

DESCRIPTION Tuktot Nogait National Park of Canada

ENUMERATED DOMAIN VALUE DEFINITION SOURCE None

VALUE UK

DESCRIPTION Ukkusiksalik National Park of Canada

ENUMERATED DOMAIN VALUE DEFINITION SOURCE None

VALUE VU

DESCRIPTION Vuntut National Park of Canada

ENUMERATED DOMAIN VALUE DEFINITION SOURCE None

VALUE WP

DESCRIPTION Wapusk National Park of Canada

ENUMERATED DOMAIN VALUE DEFINITION SOURCE None

VALUE WL

DESCRIPTION Waterton Lakes National Park of Canada

ENUMERATED DOMAIN VALUE DEFINITION SOURCE None

VALUE WB

DESCRIPTION Wood Buffalo National Park of Canada

ENUMERATED DOMAIN VALUE DEFINITION SOURCE None

VALUE YO

DESCRIPTION Yoho National Park of Canada

ENUMERATED DOMAIN VALUE DEFINITION SOURCE None

VALUE TH

DESCRIPTION Thaidene Nene National Park Reserve of Canada

ENUMERATED DOMAIN VALUE DEFINITION SOURCE None

VALUE GH
 DESCRIPTION Gwaii Haanas National Park Reserve and Haida Heritage Site
 ENUMERATED DOMAIN VALUE DEFINITION SOURCE None

[Hide Field NATPARK ▲](#)

FIELD PRESCRIBED ►

* ALIAS PRESCRIBED
 * DATA TYPE String
 * WIDTH 50
 * PRECISION 0
 * SCALE 0

FIELD DESCRIPTION

PRESCRIBED identifies a prescribed fire as reported by the agency.

DESCRIPTION SOURCE

None

LIST OF VALUES

VALUE true
 DESCRIPTION True is when a prescribed fire is reported by the agency
 ENUMERATED DOMAIN VALUE DEFINITION SOURCE None

[Hide Field PRESCRIBED ▲](#)

FIELD VERSION ►

* ALIAS VERSION
 * DATA TYPE String
 * WIDTH 30
 * PRECISION 0
 * SCALE 0

FIELD DESCRIPTION

VERSION identifies the annual dataset version.

DESCRIPTION SOURCE

None

[Hide Field VERSION ▲](#)

FIELD GID ►

* ALIAS GID
 * DATA TYPE String
 * WIDTH 254
 * PRECISION 0
 * SCALE 0

FIELD DESCRIPTION

GID is a Global Identifier that concatenates the fire year and NFIREID. This identifier is useful for selecting unique fire records merged by year.

DESCRIPTION SOURCE

None

[Hide Field GID ▲](#)

[Hide Details for object nbac_2023_20240530 ▲](#)

[Hide Fields ▲](#)

Metadata Details ►

* METADATA LANGUAGE English (CANADA)

SCOPE OF THE DATA DESCRIBED BY THE METADATA * dataset

SCOPE NAME * dataset

* LAST UPDATE 2024-05-30

ARCGIS METADATA PROPERTIES

METADATA FORMAT ArcGIS 1.0

METADATA STYLE North American Profile of ISO19115 2003

STANDARD OR PROFILE USED TO EDIT METADATA NAP

CREATED IN ARCGIS FOR THE ITEM 2024-05-21 12:00:09

LAST MODIFIED IN ARCGIS FOR THE ITEM 2024-05-30 14:56:34

AUTOMATIC UPDATES

HAVE BEEN PERFORMED Yes

LAST UPDATE 2024-05-30 14:56:34

[Hide Metadata Details ▲](#)

Metadata Contacts ►

METADATA CONTACT

INDIVIDUAL'S NAME Rob Skakun

ORGANIZATION'S NAME Government of Canada; Natural Resources Canada; Canadian Forest Service; Northern Forestry Centre; Canadian Wildland Fire Information System (CWFIS) Group

CONTACT'S ROLE point of contact

CONTACT INFORMATION ►

ADDRESS

DELIVERY POINT 5320 122 Street

CITY Edmonton

ADMINISTRATIVE AREA Alberta

POSTAL CODE T6H 3S5

COUNTRY CA

E-MAIL ADDRESS Rob.Skakun@canada.ca

[Hide Contact information ▲](#)[Hide Metadata Contacts ▲](#)

Metadata Maintenance ►

MAINTENANCE

UPDATE FREQUENCY as needed

[Hide Metadata Maintenance ▲](#)

FGDC Metadata (read-only) ▼